



Professional in Plywood Produce

CANEX GROUP
T: 86-22-88385862
F: 86-22-88385863
www.canex-group.com
info@canex-group.com

CANEX Cherry Plywood



Cherry plywood is a type of plywood that is produced from the wood of various cherry trees mainly the Black cherry. Cherry plywood is usually dark brown in colour.

We Canex Group as a manufacture of all kinds of plywood specialized in producing high quality Cherry Plywood

In the efforts of all our teamers, our Cherry Plywood sales well in oversea market; especially in European and USA market.

General Description

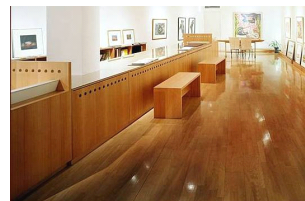
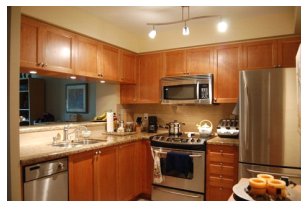
- *Generally clear and sanded smooth face with little to no knots. One piece face veneer.
- *Most common uses: Cabinets, paneling, furniture fixtures and general plywood
- *Product Dimension

Width (mm)	Length (mm)
1220	2440
Thickness (mm): 5.2~18	
ANSI Grade and Standard for Plywood (A,B,C,D)	



Prefinished Cherry Plywood

Prefinished Cherry Plywood features a 4 coat system comprised of 2 tough epoxy/ polyester acrylate sealer coats in addition to 2 premium epoxy acrylate UV topcoats. Prefinished Hardwood Plywood is a 100% solid product featuring NO VOC emissions. By reducing the need for on-site spray finishing and drying in low-wear applications, Canex prefinished hardwood panels can help you increase your throughput, reduce factory emissions, enhance quality and improve overall manufacturing efficiency by allowing finishing labor to focus on more critical areas of production.



Canex Group look forward yours respond with sincerely.

For information and price contact with Customer Service Rep or your Sales Representative.